



**Politecnico
di Torino**

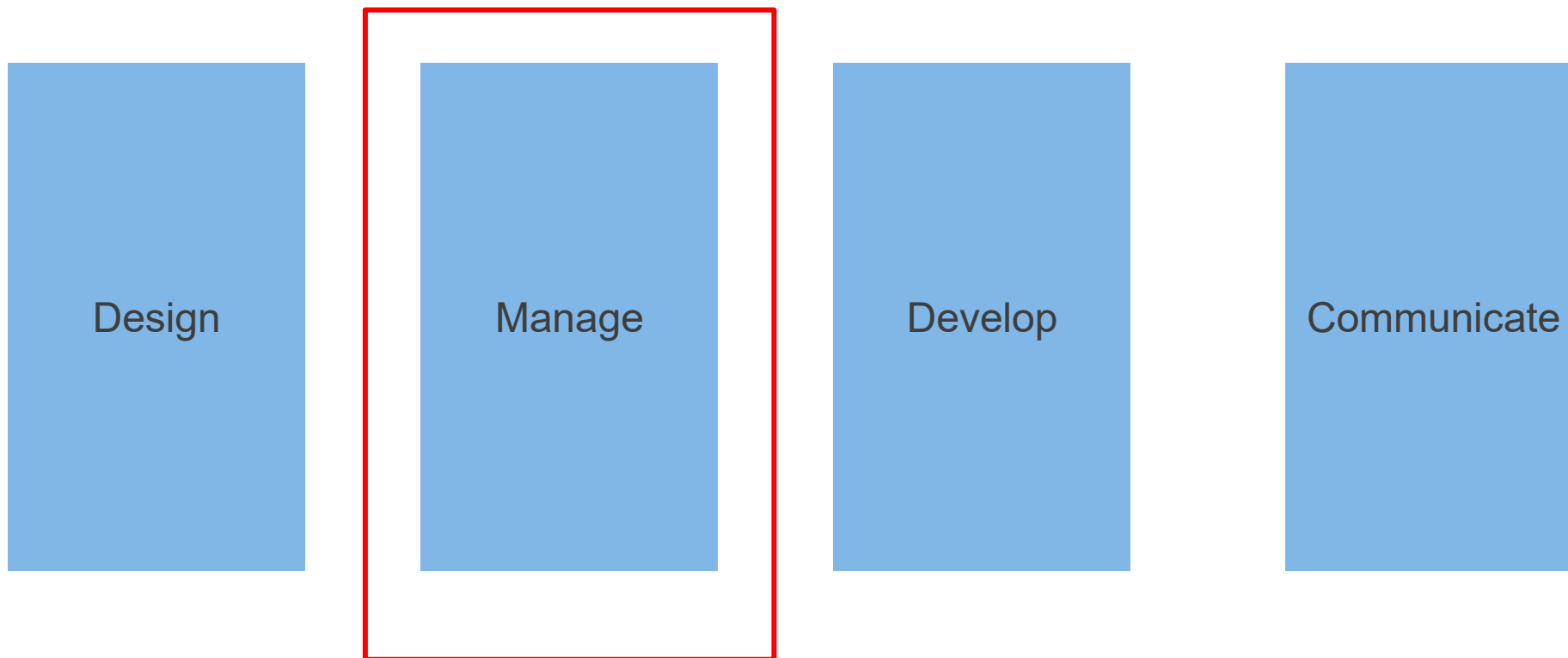


e l i s
European Laboratory for Learning and Intelligent Systems

Applied Data Science Project

L08 – WBS and Gantt

Pillars





Knowledge tools

Work breakdown structure (WBS)

It is a hierarchical and incremental decomposition of a project into work packages (WP), tasks and outputs also called as deliverables

It is developed by starting with the end objective and successively subdividing it into manageable components in terms of size, duration, and responsibility

A WBS defines milestones (turning point) to have intermediate results such as software releases, documents, visuals



Example

overview of all WPs of a project

WP No	WP Title	Lead Name	PM	Start Month	End month
1	Project management	Partner 1	1	1	10
2	Co-design	Partner 2	2	2	3
3	AI tool	Partner 3	4	4	7
4	Integration system	Partner 4	4	6	10
5	Communication	Partner 5	4	6	10
	Total		15		

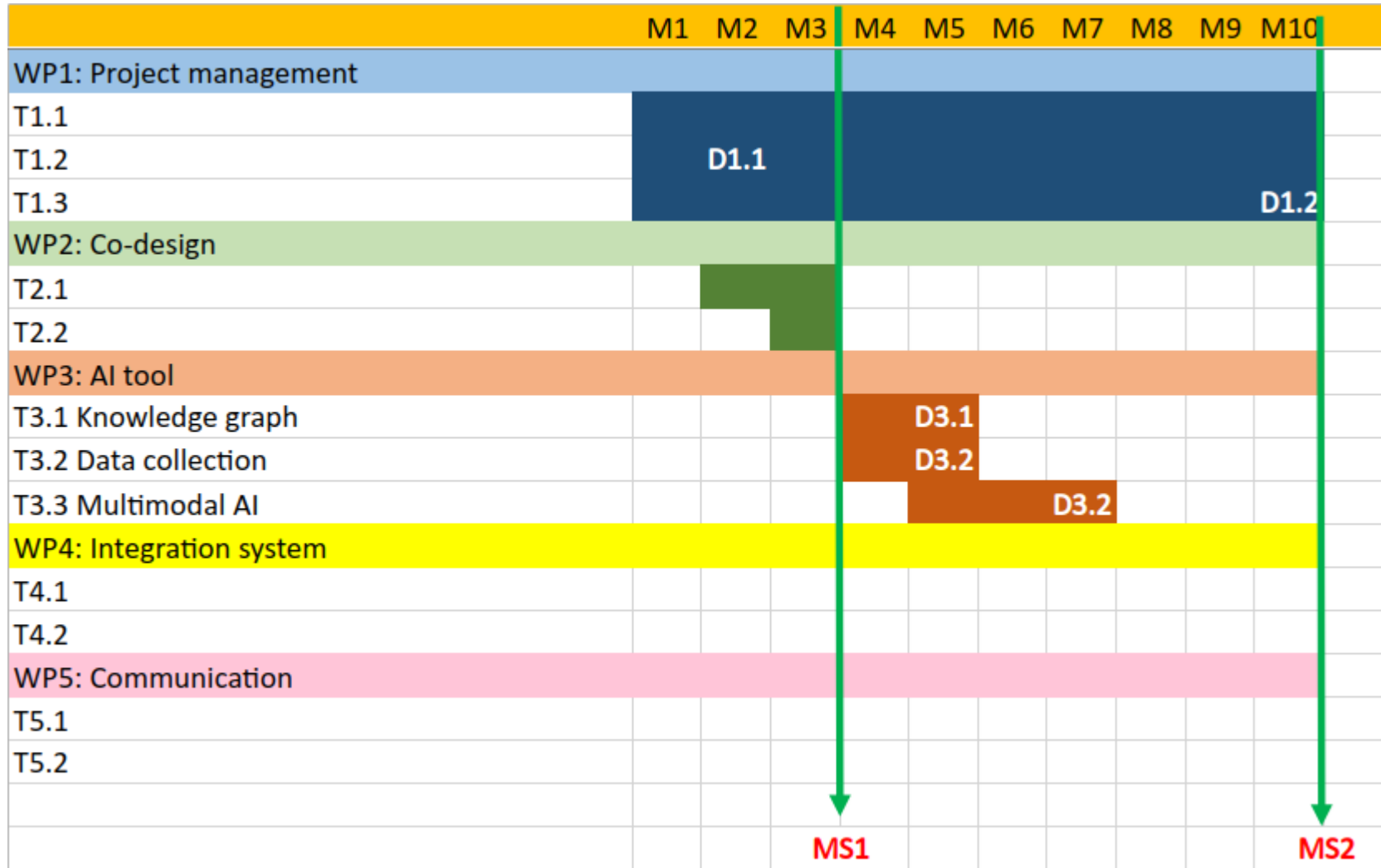
Example

Focus on a WP

Work package number	3	Lead beneficiary		Partner 3			
Work package title	AI tool						
Participant number	1	2	3	4	5	6	7
Short name of participant	P1	P2	P3	P4			
Person months per participant:	1	1	2	0			
Start month	4		End month	7			
Objectives: This work package encompasses the adoption of the AI tools and related validation process for ...							
Description of work							
T3.1 Knowledge graph (Leader: P1, Contributors: P1, P2, P3) [M4-M5] This task sets the basis for the Project knowledge graph that will host and expose to the system the information being generated within this work package. This software tool acts as a “brain” for the whole Project because ...							
T3.2 Data collection (Leader: P2), Contributors: P3, P1) [M4-M5] This task concerns the instantiation of a multimodal data collection pipeline that includes the data harmonization and storage into the knowledge graph. The modalities include ...							
T3.3 Multimodal AI (Leader: P3, Contributors: P1, P2) [M5-M7] This task investigates and designs an AI tool for ...							
Deliverables							
D3.1 Creation and initialization of the Knowledge Graph (P1, M5)							
D3.2 Instantiation of a multimodal data collection pipeline (P2, M5)							
D3.3 Initialization of the multimodal AI tool (P3, M7)							

Example

Timeline/Gantt



App for editing

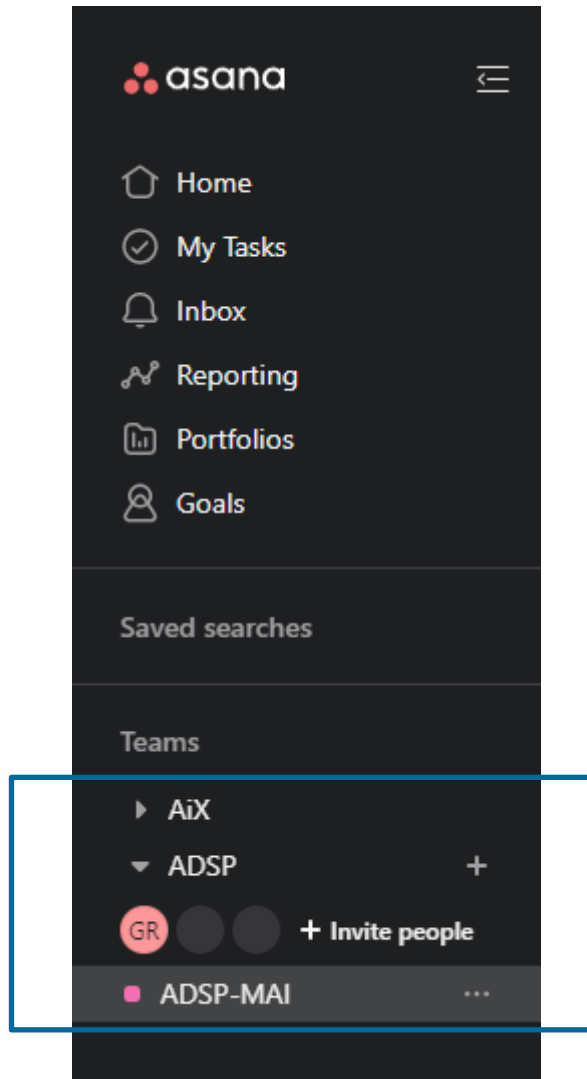
Numerous applications for editing a WBS (many are collaborative)

In this course, we will use <https://asana.com>

- it is an application running in a browser or via a dedicated mobile application
- it can be utilized with a free license (though with restrictions)
- it offers the feature of collaborative editing within the app by inviting collaborators to the project



Teams and projects

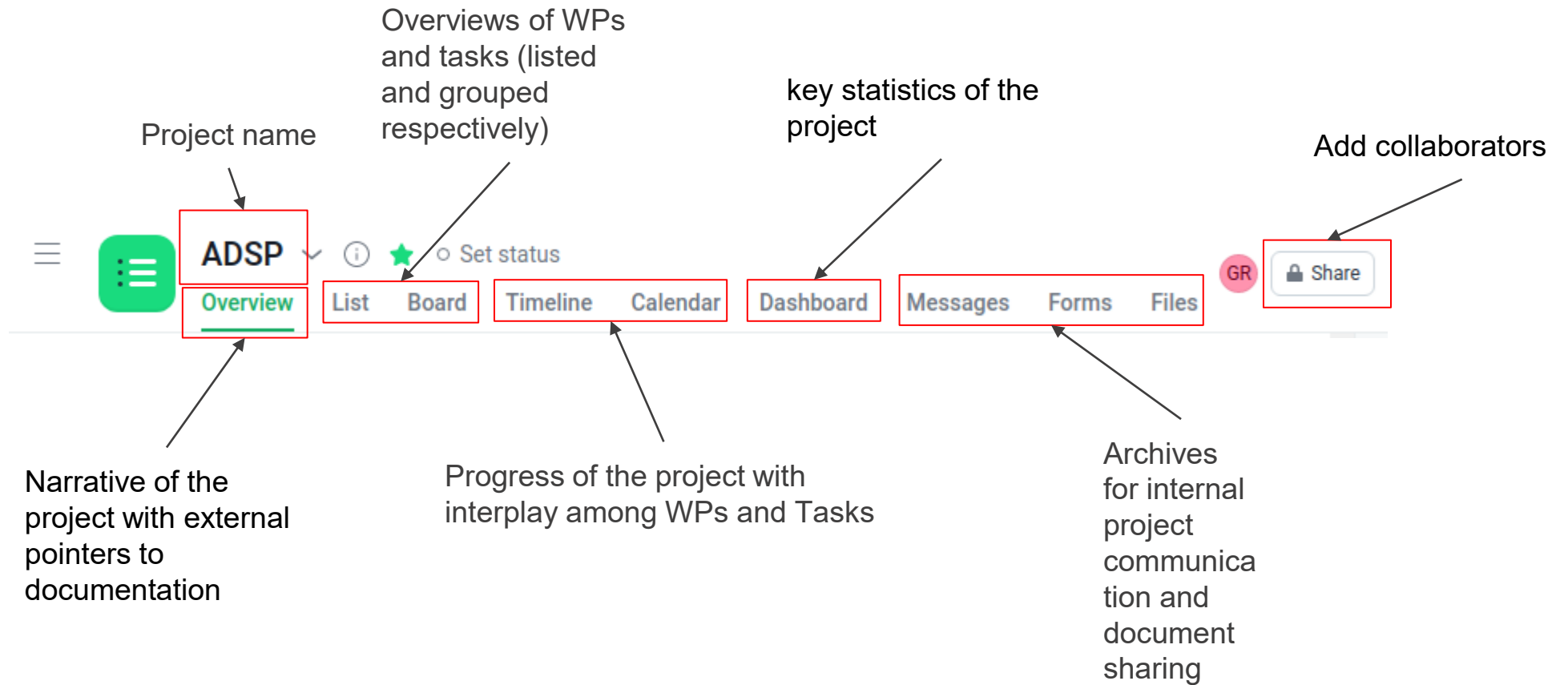


Each team has the list of the people involved in the project

One team can manage one or multiple projects such as ADSP-MAI



Asana control panel



Overview

Collaboration details: link and plan of action

Members and roles

Claim

List of milestones

How we'll collaborate

Link to the persona canvas and short description of the requirements

Link to the project diagram and short description

Link to the shared dev workspace

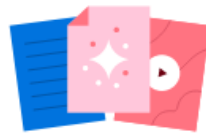
Link to the shared communication workspace

Project roles

+ Add member

GR **Giuseppe Rizzo**
Project Owner

Key resources



Align your team around a shared vision with a project brief and supporting resources.

Create project brief

Add links & files

Milestones +

◇ T2.2

What's the status?

● On track

● At risk

● Off track

📅 No due date

👤 You joined

3 days ago

GR

📄 Project created

Giuseppe Rizzo 3 days ago

Project status

WBS

List of work packages

Task name	Assignee	Due date	Projects	Tags	Priority
WP1					
T1.1		Oct 7 - 12			
T1.2		Oct 13 - 30			High
Add task...					
WP2					
T2.1		Nov 1 - 5			
T2.2					Medium
Add task...					
WP3					
T3.1					Low
T4.1					Medium
Add task...					
WP4					

A condensed view of the WBS

The screenshot displays a project management interface for a project named 'ADSP'. The top navigation bar includes a menu icon, the project name 'ADSP', and options for 'Overview', 'List', 'Board' (selected), 'Timeline', and 'More...'. There are also buttons for 'Share', 'Search', 'Upgrade', and 'GR'. Below the navigation bar, the interface shows a grid of work packages (WP1, WP2, WP3) and their associated tasks.

WP1

- T1.1: Oct 7 - 12, 3 tasks
- T1.2: Oct 13 - 30, High priority, Done status

WP2

- T2.1: Nov 1 - 5
- T2.2: Medium priority, In Progress status

WP3

- T3.1: Low priority, Not Started status
- T4.1: Medium priority, Not Started status

Each work package and task card includes an 'Add task' button at the bottom.

Gantt

filter by task statuses

filter by granularity

ADSP Overview List Board Timeline More... GR Share Search Upgrade GR

2021 Today All tasks Quarters Sort Color: Default Customize Unscheduled

October November

WP1 T... 3 T1.2 T2.1

WP2

WP3

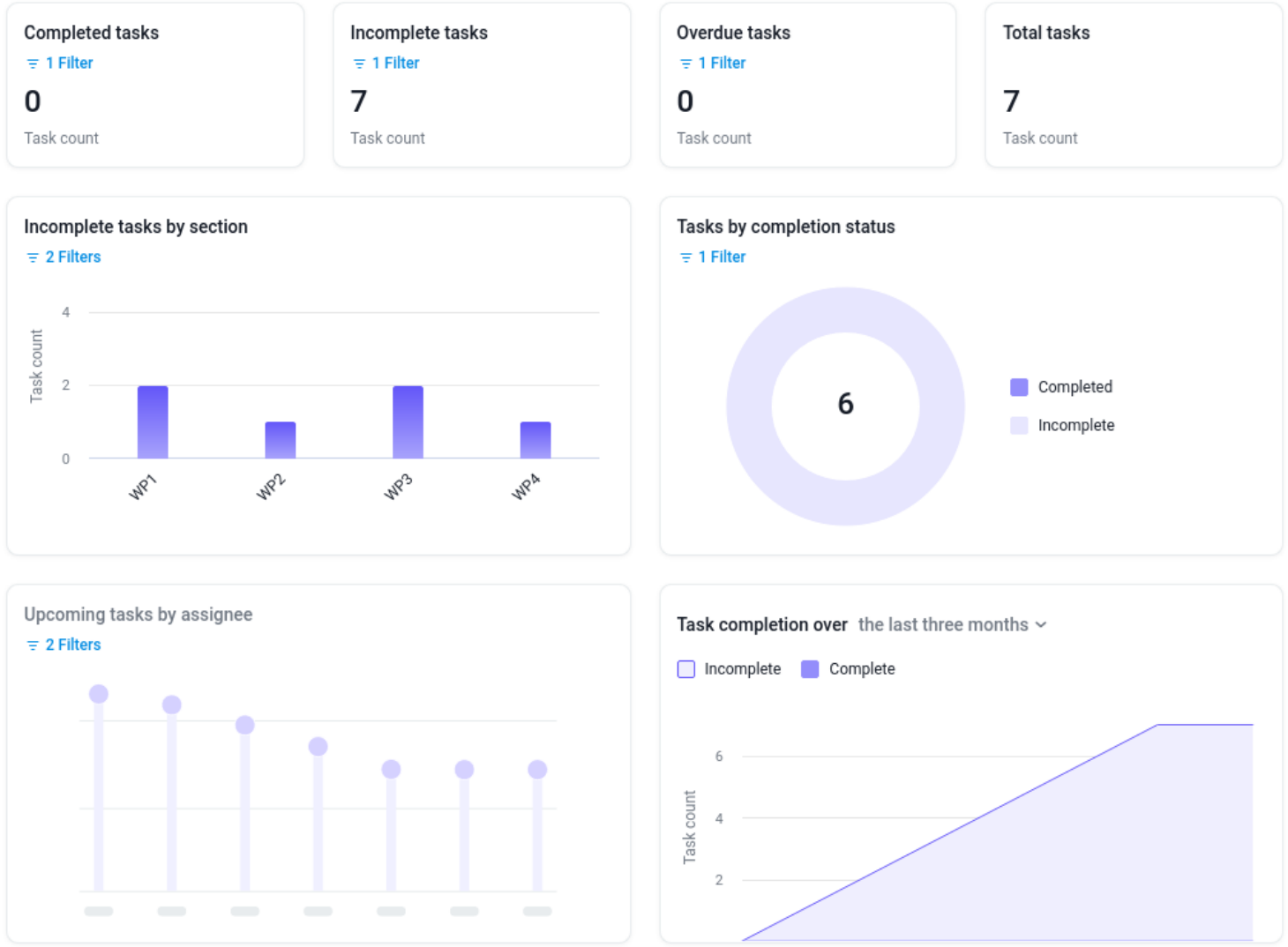
WP4

+ Add section

Dependencies across tasks. This means that T1.2 cannot start if T1.1 has ended with its output

At a glance

+ Add chart



Another app for editing



Spreadsheets are also used for documenting WBS, WP description and Gantt

The basic operations of editing in table and sharing offers a (sufficient) entry level tool for this scope





FONDAZIONE
links
PASSION FOR INNOVATION

Thank you for your attention.

Questions?



CONTACTS

Giuseppe Rizzo

Program Manager (LINKS Foundation) and
Adjunct Professor (Politecnico di Torino)

giuseppe.rizzo@polito.it

FONDAZIONE LINKS
Via Pier Carlo Boggio 61 | 10138 Torino
P. +39 011 22 76 150
LINKSFUNDATION.COM