

LINKSFOUNDATION.COM



**Politecnico  
di Torino**



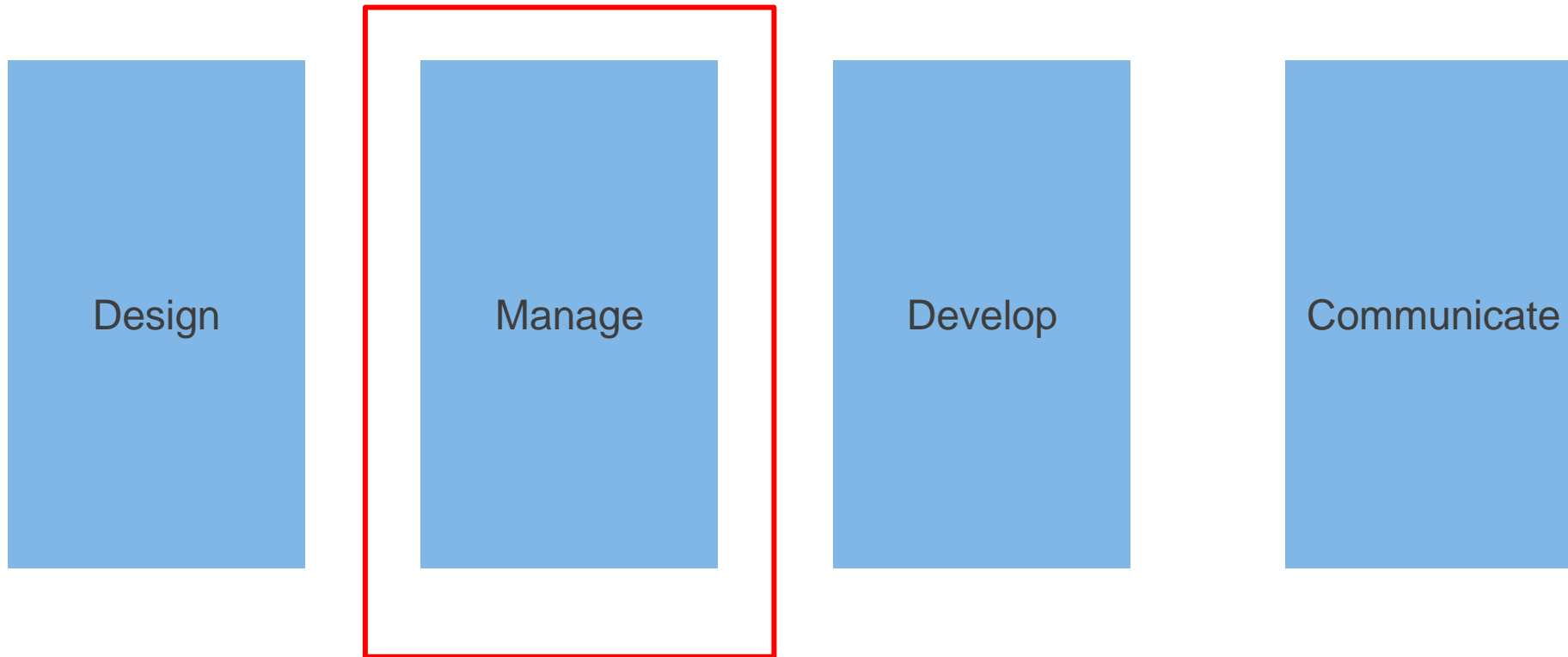
**e l i l i s**  
European Laboratory for Learning and Intelligent Systems

# Applied Data Science Project

L11 – WBS and Gantt

Giuseppe Rizzo  
Turin, October 10, 2022

# Pillars





# Knowledge tools

---

## Work breakdown structure (WBS)

It is a hierarchical and incremental decomposition of a project into work packages (WP), tasks and outputs also called as deliverables

It is developed by starting with the end objective and successively subdividing it into manageable components in terms of size, duration, and responsibility

A WBS defines milestones (turning point) to have intermediate results such as software releases, documents, visuals



# Example

overview of all WPs of a project

WP No	WP Title	Lead Name	PM	Start Month	End month
1	Project management	Partner 1	1	1	10
2	Co-design	Partner 2	2	2	3
3	AI tool	Partner 3	4	4	7
4	Integration system	Partner 4	4	6	10
5	Communication	Partner 5	4	6	10
	Total		15		

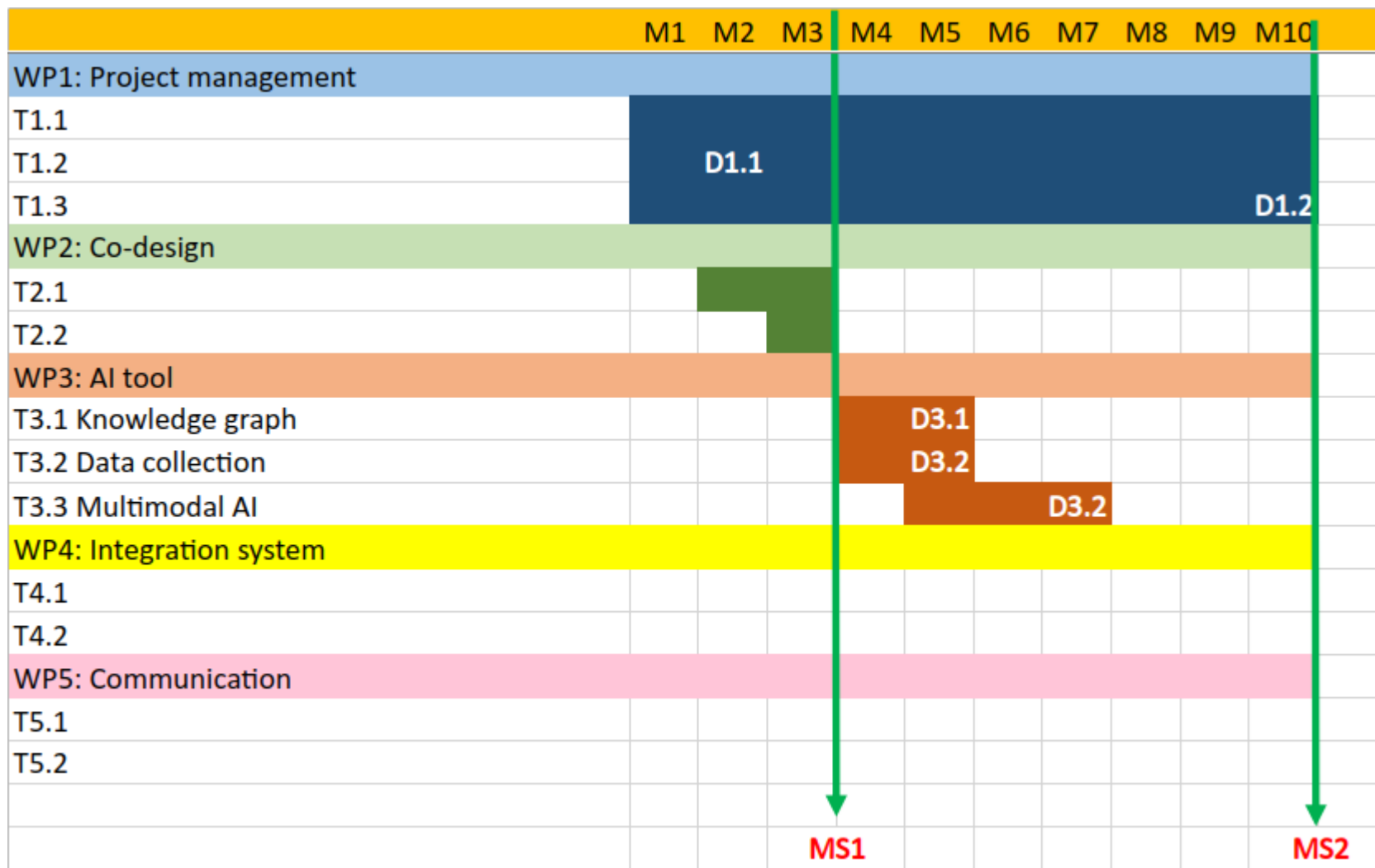
# Example

## Focus on a WP

<b>Work package number</b>	3	<b>Lead beneficiary</b>		Partner 3			
<b>Work package title</b>	AI tool						
<b>Participant number</b>	1	2	3	4	5	6	7
<b>Short name of participant</b>	P1	P2	P3	P4			
<b>Person months per participant:</b>	1	1	2	0			
<b>Start month</b>	4		<b>End month</b>	7			
<b>Objectives:</b> This work package encompasses the adoption of the AI tools and related validation process for ...							
<b>Description of work</b>							
<b>T3.1 Knowledge graph (Leader: P1, Contributors: P1, P2, P3) [M4-M5]</b> This task sets the basis for the Project knowledge graph that will host and expose to the system the information being generated within this work package. This software tool acts as a “brain” for the whole Project because ...							
<b>T3.2 Data collection (Leader: P2), Contributors: P3, P1) [M4-M5]</b> This task concerns the instantiation of a multimodal data collection pipeline that includes the data harmonization and storage into the knowledge graph. The modalities include ...							
<b>T3.3 Multimodal AI (Leader: P3, Contributors: P1, P2) [M5-M7]</b> This task investigates and designs an AI tool for ...							
<b>Deliverables</b>							
<b>D3.1 Creation and initialization of the Knowledge Graph (P1, M5)</b>							
<b>D3.2 Instantiation of a multimodal data collection pipeline (P2, M5)</b>							
<b>D3.3 Initialization of the multimodal AI tool (P3, M7)</b>							

# Example

## Timeline/Gantt



# App for editing

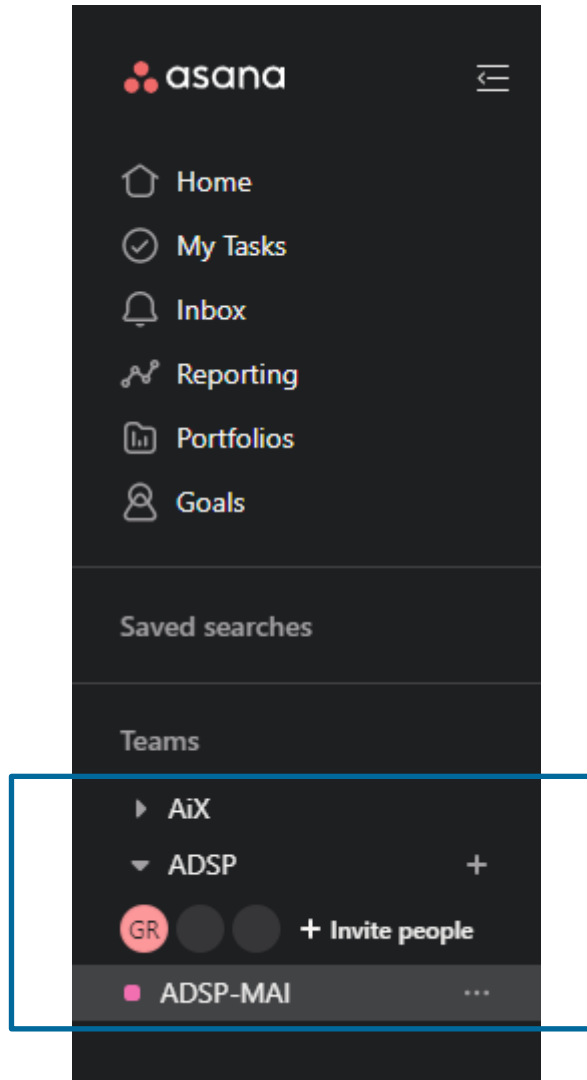
Numerous applications for editing a WBS (many are collaborative)

In this course, we will use <https://asana.com>

- it is an application running in a browser or via a dedicated mobile application
- it can be utilized with a free license (though with restrictions)
- it offers the feature of collaborative editing within the app by inviting collaborators to the project



# Teams and projects



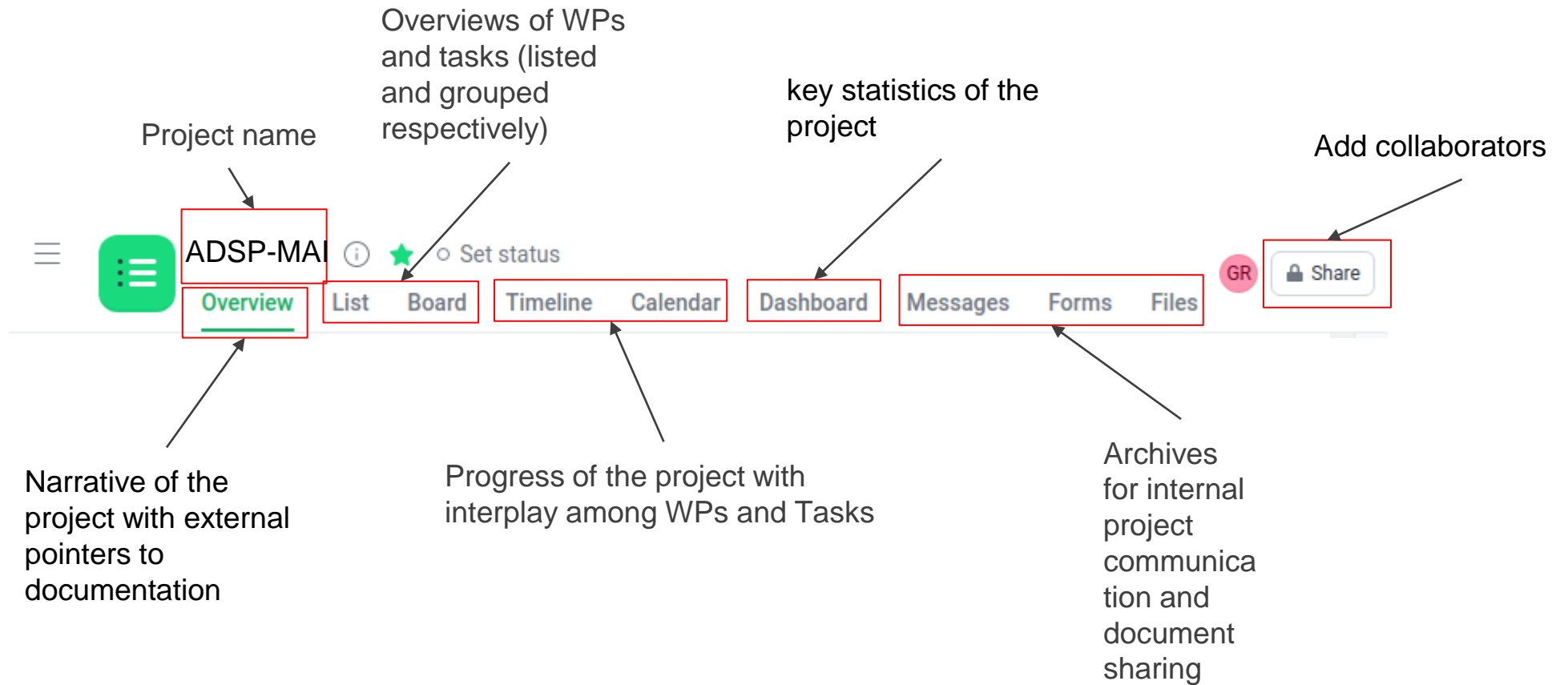
Each team has the list of the people involved in the project

One team can manage one or multiple projects such as ADSP-MAI





# Asana control panel



# Overview

Collaboration details: link and plan of action

Members and roles

Claim

List of milestones

### How we'll collaborate

Link to the persona canvas and short description of the requirements

Link to the project diagram and short description

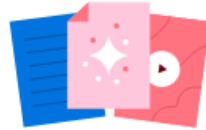
Link to the shared dev workspace

Link to the shared communication workspace

### Project roles

+ Add member GR Giuseppe Rizzo Project Owner

### Key resources

 Align your team around a shared vision with a project brief and supporting resources.

Create project brief Add links & files

### Milestones +

T2.2

### What's the status?

On track At risk Off track

No due date

You joined  
3 days ago

Project created  
Giuseppe Rizzo 3 days ago

Project status

# WBS

List of work packages

Task name	Assignee	Due date	Projects	Tags	Priority
<b>WP1</b>					
T1.1		Oct 7 - 12			
T1.2		Oct 13 - 30			High
Add task...					
<b>WP2</b>					
T2.1		Nov 1 - 5			
T2.2					Medium
Add task...					
<b>WP3</b>					
T3.1					Low
T4.1					Medium
Add task...					
<b>WP4</b>					

# A condensed view of the WBS

The screenshot displays a project management interface for a project named "ADSP". The top navigation bar includes a menu icon, the project name "ADSP", and options for "Overview", "List", "Board" (selected), "Timeline", and "More...". There are also buttons for "Share" and "Upgrade". A search bar and a "GR" (Guest) indicator are also present.

Below the navigation bar, the board is titled "Created on Friday" and includes controls for "All tasks", "Filter", "Sort", and "Customize".

The board is divided into three work packages (WPs):

- WP1:** Contains two tasks:
  - T1.1: Status "Completed" (checked), dates "Oct 7 - 12", 3 assignees.
  - T1.2: Status "Done", priority "High", dates "Oct 13 - 30".
- WP2:** Contains two tasks:
  - T2.1: Status "Upcoming" (hourglass icon), dates "Nov 1 - 5".
  - T2.2: Status "In Progress", priority "Medium".
- WP3:** Contains two tasks:
  - T3.1: Status "Not Started", priority "Low".
  - T4.1: Status "Not Started", priority "Medium".

Each work package has a "+ Add task" button at the bottom.

# Gantt

filter by task statuses

filter by granularity

GR Share Search Upgrade GR

2021 Today All tasks Quarters Sort Color: Default Customize Unscheduled

+ Add task

October November

WP1 T... 3 T1.2 T2.1

WP2

WP3

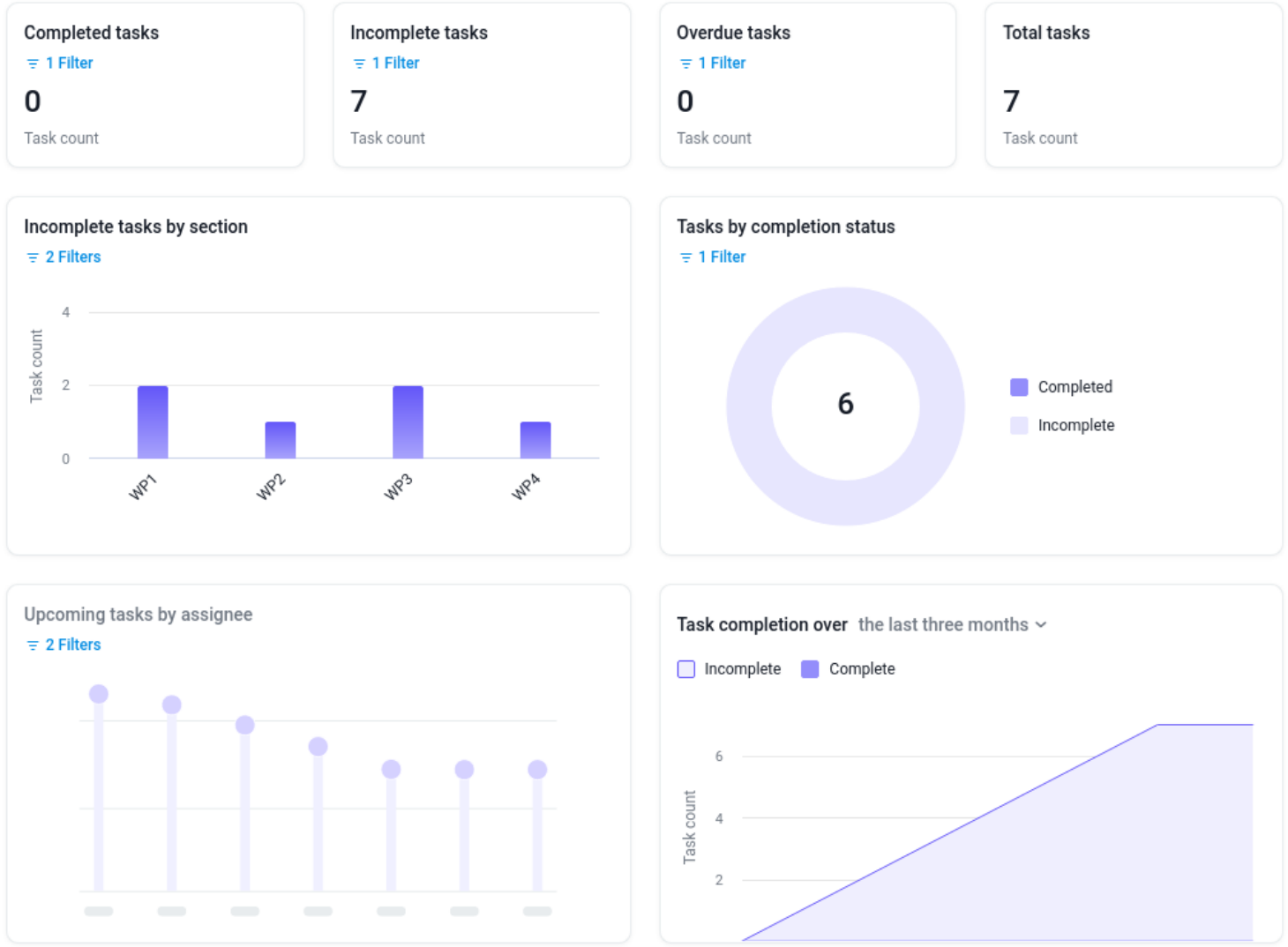
WP4

+ Add section

Dependencies across tasks. This means that T1.2 cannot start if T1.1 has ended with its output

# At a glance

+ Add chart



# Another app for editing



Spreadsheets are also used for documenting WBS, WP description and Gantt

The basic operations of editing in table and sharing offers a (sufficient) entry level tool for this scope



FONDAZIONE  
**links**  
PASSION FOR INNOVATION

**Thank you for your attention.**

Questions?



# CONTACTS

Giuseppe Rizzo

Program Manager (LINKS Foundation) and  
Adjunct Professor (Politecnico di Torino)

[giuseppe.rizzo@polito.it](mailto:giuseppe.rizzo@polito.it)



**FONDAZIONE LINKS**  
Via Pier Carlo Boggio 61 | 10138 Torino  
P. +39 011 22 76 150  
**LINKSFUNDATION.COM**