

LINKSFOUNDATION.COM

# Applied Data Science Project

L9 - Project management tools

Giuseppe Rizzo  
Turin, October 6, 2021

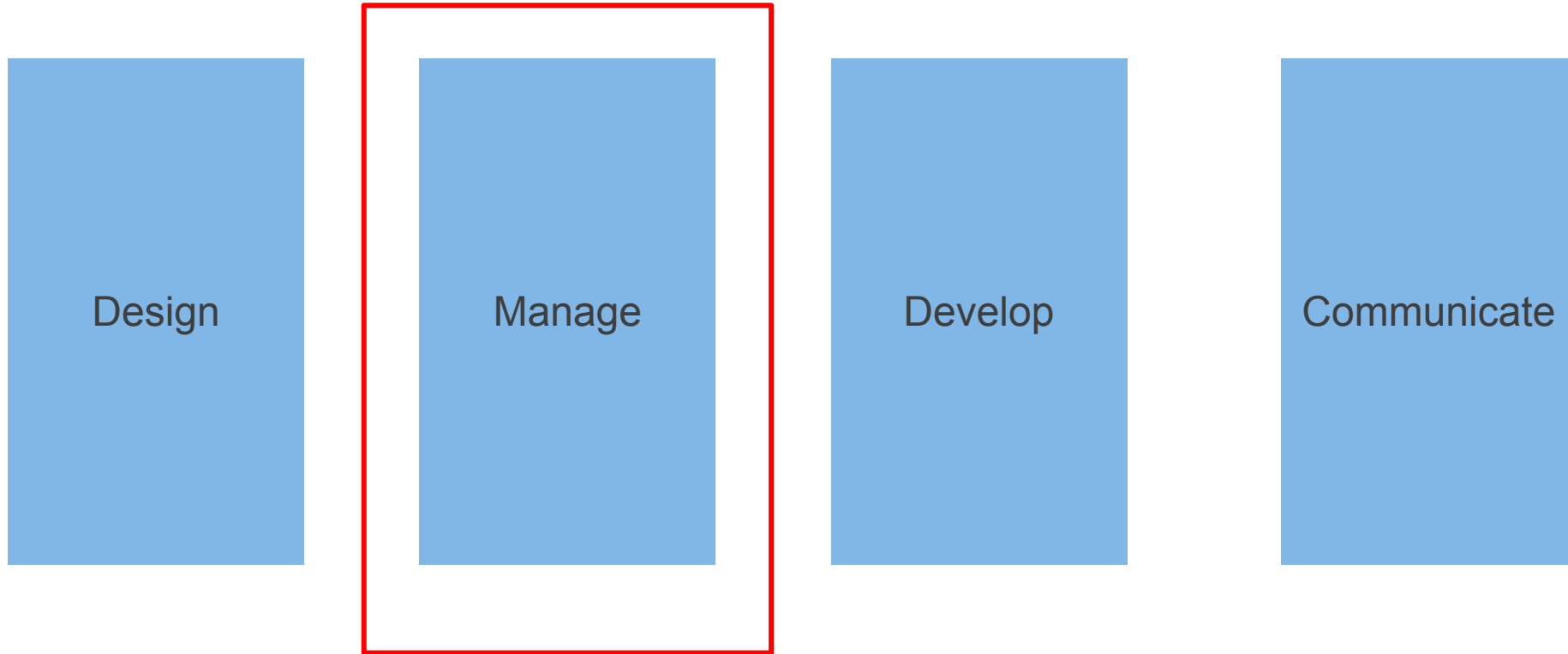


**Politecnico  
di Torino**



**e l i a s**  
European Laboratory for Learning and Intelligent Systems

# Pillars





# Knowledge tools

---

## Work breakdown structure (WBS)

It is a hierarchical and incremental decomposition of a project into work packages, tasks and outputs also called as deliverables

It is developed by starting with the end objective and successively subdividing it into manageable components in terms of size, duration, and responsibility

A WBS defines milestones (turning point) to have intermediate results such as software releases, documents, visuals



# Example

overview of all WPs of a project

| WP No | WP Title           | Lead Name | PM | Start Month | End month |
|-------|--------------------|-----------|----|-------------|-----------|
| 1     | Project management | Partner 1 | 1  | 1           | 10        |
| 2     | Co-design          | Partner 2 | 2  | 2           | 3         |
| 3     | AI tool            | Partner 3 | 3  | 4           | 7         |
| 4     | Integration system | Partner 4 | 4  | 6           | 10        |
| 5     | Communication      | Partner 5 | 4  | 6           | 10        |
|       |                    |           |    |             |           |
|       |                    |           |    |             |           |
|       |                    |           |    |             |           |
|       | Total              |           | 10 |             |           |



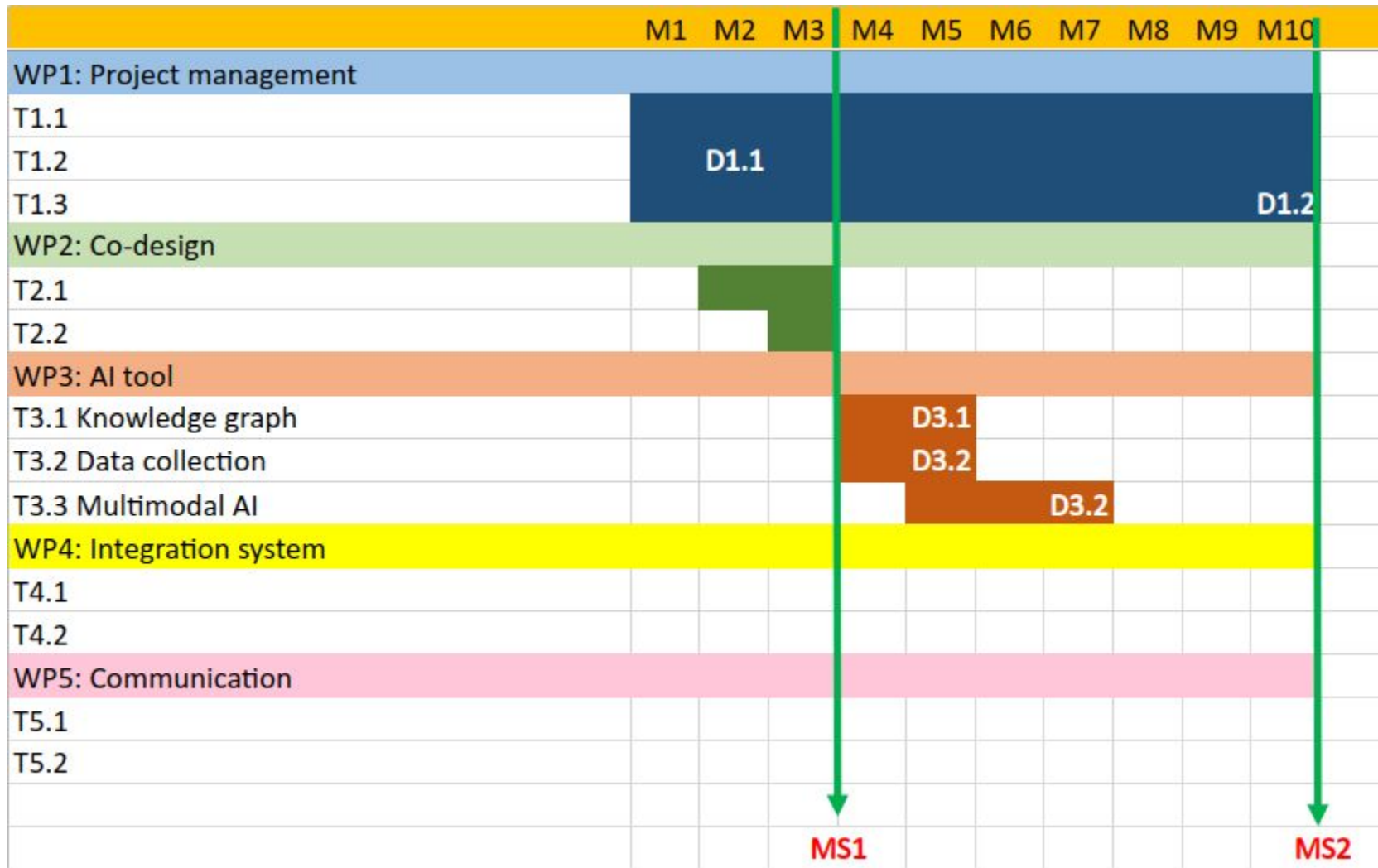
# Example

## Focus on a WP

|                                                                                                                                                                                                                                                                                                                 |         |                         |                  |           |   |   |   |
|-----------------------------------------------------------------------------------------------------------------------------------------------------------------------------------------------------------------------------------------------------------------------------------------------------------------|---------|-------------------------|------------------|-----------|---|---|---|
| <b>Work package number</b>                                                                                                                                                                                                                                                                                      | 3       | <b>Lead beneficiary</b> |                  | Partner 3 |   |   |   |
| <b>Work package title</b>                                                                                                                                                                                                                                                                                       | AI tool |                         |                  |           |   |   |   |
| <b>Participant number</b>                                                                                                                                                                                                                                                                                       | 1       | 2                       | 3                | 4         | 5 | 6 | 7 |
| <b>Short name of participant</b>                                                                                                                                                                                                                                                                                | P1      | P2                      | P3               | P4        |   |   |   |
| <b>Person months per participant:</b>                                                                                                                                                                                                                                                                           | 1       | 1                       | 2                | 0         |   |   |   |
| <b>Start month</b>                                                                                                                                                                                                                                                                                              | 4       |                         | <b>End month</b> | 7         |   |   |   |
| <b>Objectives:</b> This work package encompasses the adoption of the AI tools and related validation process for ...                                                                                                                                                                                            |         |                         |                  |           |   |   |   |
| <b>Description of work</b>                                                                                                                                                                                                                                                                                      |         |                         |                  |           |   |   |   |
| <b>T3.1 Knowledge graph (Leader: P1, Contributors: P1, P2, P3) [M4-M5]</b><br>This task sets the basis for the Project knowledge graph that will host and expose to the system the information being generated within this work package. This software tool acts as a “brain” for the whole Project because ... |         |                         |                  |           |   |   |   |
| <b>T3.2 Data collection (Leader: P2), Contributors: P3, P1) [M4-M5]</b><br>This task concerns the instantiation of a multimodal data collection pipeline that includes the data harmonization and storage into the knowledge graph. The modalities include ...                                                  |         |                         |                  |           |   |   |   |
| <b>T3.3 Multimodal AI (Leader: P3, Contributors: P1, P2) [M5-M7]</b><br>This task investigates and designs an AI tool for ...                                                                                                                                                                                   |         |                         |                  |           |   |   |   |
| <b>Deliverables</b>                                                                                                                                                                                                                                                                                             |         |                         |                  |           |   |   |   |
| <b>D3.1 Creation and initialization of the Knowledge Graph (P1, M5)</b>                                                                                                                                                                                                                                         |         |                         |                  |           |   |   |   |
| <b>D3.2 Instantiation of a multimodal data collection pipeline (P2, M5)</b>                                                                                                                                                                                                                                     |         |                         |                  |           |   |   |   |
| <b>D3.3 Initialization of the multimodal AI tool (P3, M7)</b>                                                                                                                                                                                                                                                   |         |                         |                  |           |   |   |   |

# Example

## Timeline/Gantt



# App for editing

Numerous applications for editing a WBS (many are collaborative)

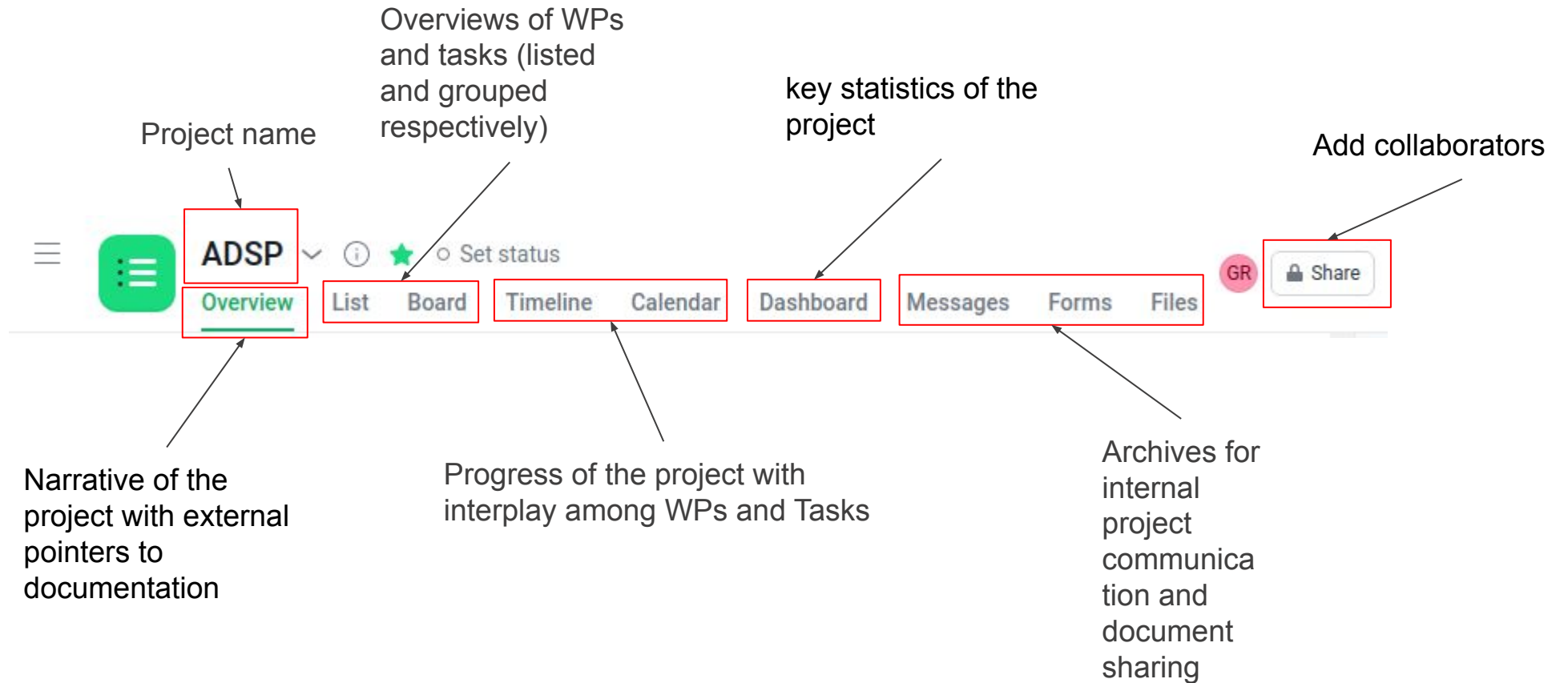
In this course, we will use <https://asana.com>

- it is an application running in a browser or via a dedicated mobile application
- it can be utilized with a free licence
- it offers the feature of collaborative editing within the app by inviting collaborators to the project





# Asana control panel





# Overview

Collaboration details: link and plan of action

### How we'll collaborate

Link to the persona canvas and short description of the requirements

Link to the project diagram and short description

Link to the shared dev workspace

Link to the shared communication workspace

Members and roles

### Project roles

+ Add member

GR **Giuseppe Rizzo** Project Owner

Claim

### Key resources

Align your team around a shared vision with a project brief and supporting resources.

Create project brief Add links & files

List of milestones

### Milestones +

T2.2

### What's the status?

On track At risk Off track

No due date

**You joined**  
3 days ago

GR

**Project created**  
Giuseppe Rizzo 3 days ago

Project status

List of work packages

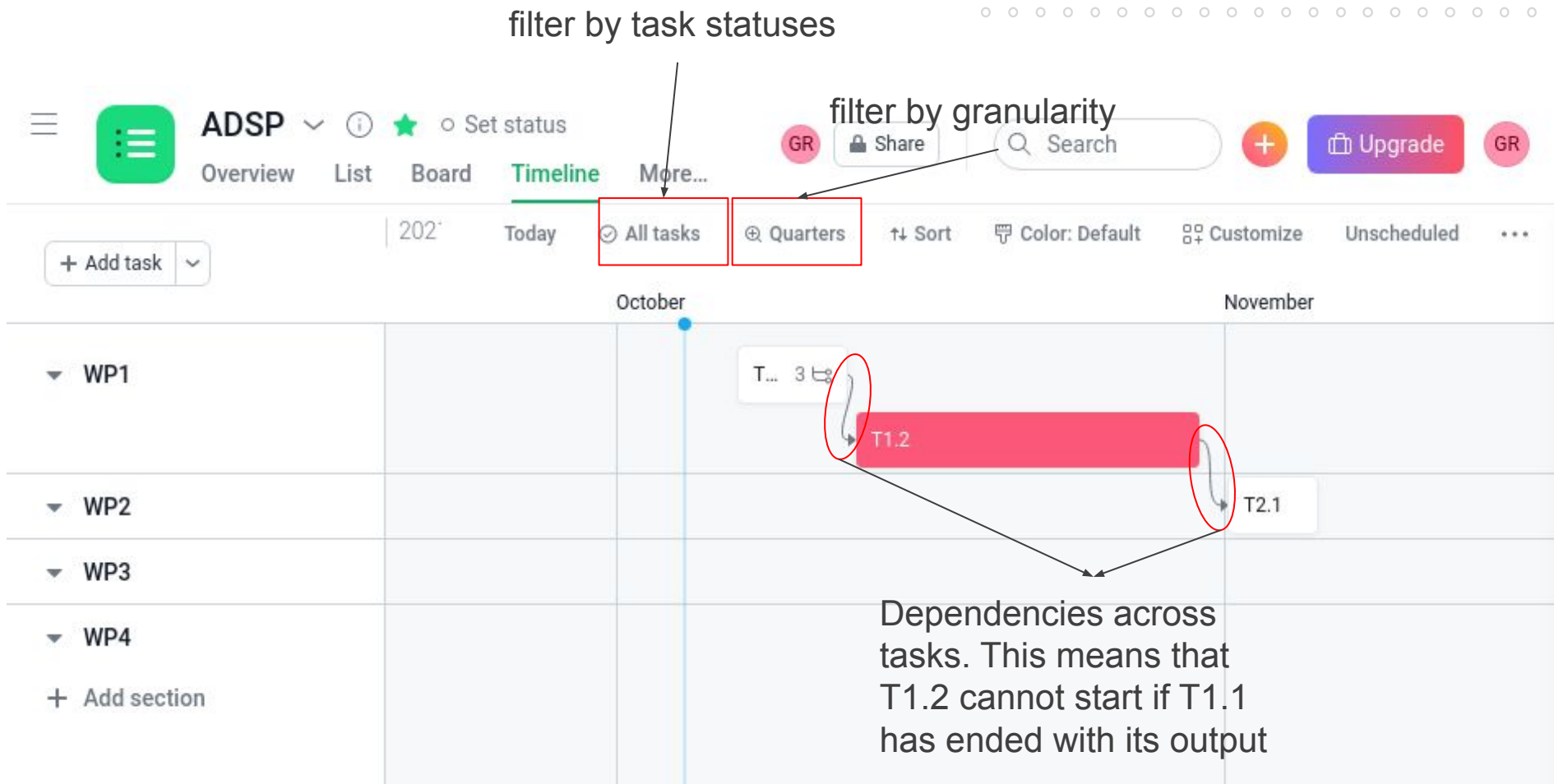
| Task name   | Assignee | Due date    | Projects | Tags | Priority |
|-------------|----------|-------------|----------|------|----------|
| <b>WP1</b>  |          |             |          |      |          |
| T1.1        |          | Oct 7 - 12  |          |      |          |
| T1.2        |          | Oct 13 - 30 |          |      | High     |
| Add task... |          |             |          |      |          |
| <b>WP2</b>  |          |             |          |      |          |
| T2.1        |          | Nov 1 - 5   |          |      |          |
| T2.2        |          |             |          |      | Medium   |
| Add task... |          |             |          |      |          |
| <b>WP3</b>  |          |             |          |      |          |
| T3.1        |          |             |          |      | Low      |
| T4.1        |          |             |          |      | Medium   |
| Add task... |          |             |          |      |          |
| <b>WP4</b>  |          |             |          |      |          |

# A condensed view of the WBS

The screenshot displays a project management interface for a project named 'ADSP'. The top navigation bar includes a menu icon, the project name 'ADSP', and options for 'Overview', 'List', 'Board' (selected), 'Timeline', and 'More...'. There are also buttons for 'Share' and 'Upgrade', and a search bar. Below the navigation bar, the main workspace is titled 'Created on Friday' and features controls for 'All tasks', 'Filter', 'Sort', and 'Customize'. The workspace is organized into three columns representing Work Packages (WP1, WP2, WP3). Each WP contains task cards with details such as task ID, dates, priority, and status. WP1 has two tasks: T1.1 (Oct 7-12, 3 assignees) and T1.2 (Oct 13-30, High priority, Done status). WP2 has two tasks: T2.1 (Nov 1-5) and T2.2 (Medium priority, In Progress status). WP3 has two tasks: T3.1 (Low priority, Not Started status) and T4.1 (Medium priority, Not Started status). Each WP column has a '+ Add task' button at the bottom.

| Work Package | Task ID | Start - End | Assignees | Priority | Status      |
|--------------|---------|-------------|-----------|----------|-------------|
| WP1          | T1.1    | Oct 7 - 12  | 3         | None     | Completed   |
| WP1          | T1.2    | Oct 13 - 30 | None      | High     | Done        |
| WP2          | T2.1    | Nov 1 - 5   | None      | None     | None        |
| WP2          | T2.2    | None        | None      | Medium   | In Progress |
| WP3          | T3.1    | None        | None      | Low      | Not Started |
| WP3          | T4.1    | None        | None      | Medium   | Not Started |

# Gantt



# At a glance



ADSP ▼ ⓘ ★ ○ Set status

Overview List Board Timeline Calendar **Dashboard** More...

GR

Share

Search

+

Upgrade

GR

+ Add chart

## Completed tasks

1 Filter

0

Task count

## Incomplete tasks

1 Filter

7

Task count

## Overdue tasks

1 Filter

0

Task count

## Total tasks

7

Task count

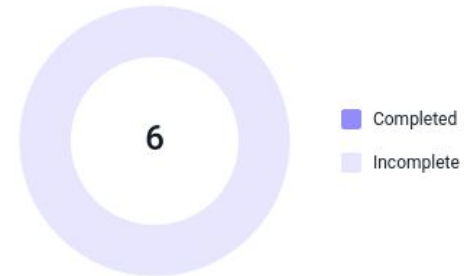
## Incomplete tasks by section

2 Filters



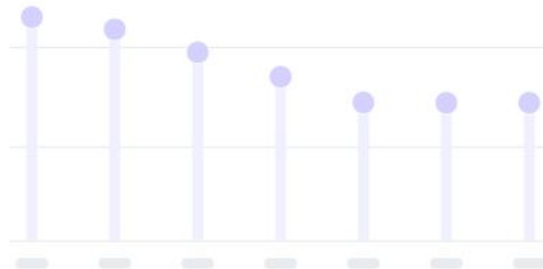
## Tasks by completion status

1 Filter



## Upcoming tasks by assignee

2 Filters



## Task completion over the last three months

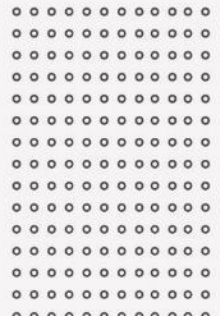
Incomplete Complete





**Thank you for your attention.**

Questions?



# CONTACTS

Giuseppe Rizzo

Team Leader

p. +39 011 2276244

e. [giuseppe.rizzo@linksfoundation.com](mailto:giuseppe.rizzo@linksfoundation.com)



PASSION FOR INNOVATION

**FONDAZIONE LINKS**

Via Pier Carlo Boggio 61 | 10138 Torino

P. +39 011 22 76 150

**[LINKSFUNDATION.COM](http://LINKSFUNDATION.COM)**